



Nominal Diameter

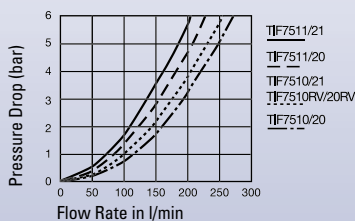
# 19

 = 280 mm<sup>2</sup>


TEMA Series

# TIF7500

47% of actual size


**Flow Capacity Viscosity**  
for 32cSt at 40°C  
as per ISO 7241/2-2000


### Technical Description

The IF series plug profile is produced according to ISO Standard 16028 and is compatible with other makes of the same standard. These couplings offer an absolutely dry break – no oil loss during uncoupling. Thanks to the valve construction, the coupling has a minimum pressure drop, and thus achieves maximum cost-effectiveness.

Additional thread on request.

### Advantages

The coupling can be operated with one hand and is equipped with a safety locking device to prevent unintentional uncoupling. With the patented pressure eliminator it is possible to couple under static pressure until working pressure.

### Available Valves



### Working Pressure

See chart.

### Working Temperature\*

-30°C up to +100°C (NBR)  
-25°C up to +200°C (FKM)  
depending on the medium.

\*At a temperature below -25°C and above +200°C special seals are available on request.

### Material

#### Coupling

Coupling Body  
Sleeve  
Valve  
Springs  
Locking Balls  
Seals  
Valve Holder  
Thread Body

### Standard

Steel, QPQ-treated  
Steel, Zinc Pl., Yellow pass., sealed  
Steel, Zinc Pl., Yellow pass., sealed  
AISI 301  
AISI 420 C  
NBR  
Steel, Zinc Pl., Yellow pass., sealed  
Steel, Zinc Pl., Yellow pass., sealed

### Stainless Steel Version

AISI 316  
AISI 316  
AISI 316  
AISI 301  
AISI 420 C  
FKM  
AISI 316  
AISI 316

### Plug

Plug Body

Steel, Hardened, Zinc Plated, Yellow passivated, sealed  
Steel, Zinc Pl., Yellow pass., sealed  
AISI 301  
NBR/PUR  
Brass  
Steel, Zinc Pl., Yellow pass., sealed

AISI 316  
AISI 316  
AISI 301  
FKM  
AISI 316  
AISI 316

### Pressure Eliminator Version (Coupling/Plug)

2. Valve  
2. Valve Holder

Brass  
Brass

### Pressure (Coupling/Plug)

Bursting Pressure coupled  
Working Pressure uncoupled

> 1000 bar  
250 bar

> 1000 bar  
150 bar/250 bar

## Couplings

## TEMA Series TIF7500

	Connection A	Hex SW	Hex1 SW1	L mm	L1 mm	D mm	D1 mm	D2 mm	Working Press. in bar	Version	Seal	Part Number	DS
<p>Female Thread</p>	G 3/4	46		96	16	50		46	250	Standard	NBR	TIF7510	■
	G 3/4	46		96	16	50		46	250	Stainl. Steel	FKM	TIF7510 RV	■□
	G 1	46		102	18	50		46	250	Standard	NBR	TIF7510-100	■□
	G 1	46		102	18	50		46	250	Stainl. Steel	FKM	TIF7510-100 RV	■□

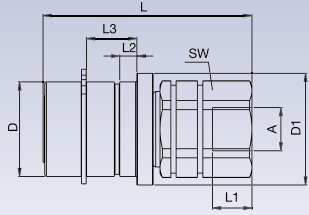
DS = Delivery Status: ■ in stock

■□ on short call

□ medium term delivery

## Couplings for Multiplate

## TEMA Series TIF7500

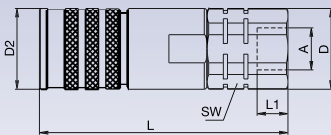


Female Thread with locking ring according to DIN 471 Standard

Connection A	Hex SW	L mm	L1 mm	L2 mm	L3 mm	D mm	D1 mm	D2 mm	Working Press. in bar	Version	Seal	Part Number	DS
G 3/4	46	95	16	5,2	15,3	46,8	53		250	Standard	NBR	TIF7510 E	■ □
G 1	46	101	18	5,2	15,3	46,8	53		250	Standard	NBR	TIF7510-100 E	■ □

## Couplings with Pressure Eliminator

## TEMA Series TIF7500

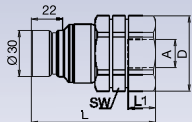


Female Thread

Connection A	Hex SW	Hex1 SW1	L mm	L1 mm	D mm	D1 mm	D2 mm	Working Press. in bar	Version	Seal	Part Number	DS
G 3/4	50		130	16	54		46	250	Pressure Eli.	NBR	TIF7511	■ □
G 1	50		136	16	54		46	250	Pressure Eli.	NBR	TIF7511-100	■ □

## Plugs

## TEMA Series TIF7500

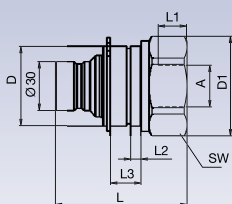


Female Thread

Connection A	Hex SW	Hex1 SW1	L mm	L1 mm	D mm	D1 mm	D2 mm	Working Press. in bar	Version	Seal	Part Number	DS
G 3/4	46		77	16	50			250	Standard	NBR	TIF7520	■ □
G 3/4	46		77	16	50			250	Stainl. Steel	FKM	TIF7520 RV	■ □
G 1	46		83	18	50			250	Standard	NBR	TIF7520-100	■ □
G 1	46		83	18	50			250	Stainl. Steel	FKM	TIF7520-100 RV	■ □

## Plugs for Multiplate

## TEMA Series TIF7500



Female Thread with locking ring according to DIN 471 Standard

Connection A	Hex SW	L mm	L1 mm	L2 mm	L3 mm	D mm	D1 mm	D2 mm	Working Press. in bar	Version	Seal	Part Number	DS
G 3/4	50	83	16	5,2	15,3	46,8	50		250	Standard	NBR	TIF7520 E	■ □

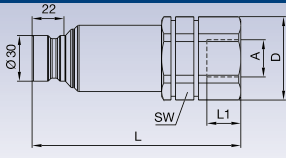
DS = Delivery Status: ■ in stock

□ on short call

□ medium term delivery

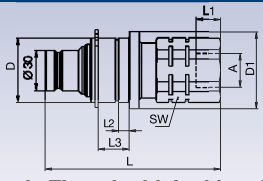
## Plugs with Pressure Eliminator

TEMA Series TIF7500

 Female Thread	Connection A	Hex SW	Hex1 SW1	L mm	L1 mm	D mm	D1 mm	D2 mm	Working Press. in bar	Version	Seal	Part Number	DS
	G 3/4 IG	50		114	16	54				250	Pressure Eli.	NBR	TIF7521
G 1 IG	50		120	16	54				250	Pressure Eli.	NBR	TIF7521-100	■□

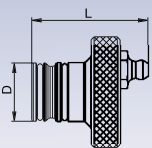
## Plugs with Pressure Eliminator for Multiplate

TEMA Series TIF7500

 Female Thread with locking ring according to DIN 471 Standard	Connection A	Hex SW	L mm	L1 mm	L2 mm	L3 mm	D mm	D1 mm	D2 mm	Working Press. in bar	Version	Seal	Part Number	DS
	G 3/4	50	114	16	5,2	15,3	46,8	53			250	Press. Eli.	NBR	TIF7521 E
G 1	50	120	16	5,2	15,3	46,8	53			250	Press. Eli.	NBR	TIF7521-100 E	■□

## Lubrication Nipple

TEMA Series TIF7500

	Description	L mm	D mm	Part Number	DS
	Coupling	48	30	TGRIF75	■□


## Seal-Kit for Plug

TEMA Series TIF7500

Description	Material	Part Number	DS
Plug	NBR	TIF7500-PSN	■□
Plug	FKM	TIF7500-PSV	■□
Plug	EPDM	TIF7500-PSEP	■□
Plug	PUR	TIF7500-PSPU	■□
Further sealing materials on request.			

## Dust Protection

TEMA Series TIF7500

	Description	L mm	D mm	Material	Color	Part Number	DS
	Coupling	185	42	PVC	Blue	TIF7516	■
Plug	185	42	PVC	Blue	TIF7526	■□	
Further colors on request.							

DS = Delivery Status: ■ in stock

■□ on short call

■□ medium term delivery