



Nominal Diameter

6 = 30 mm²

RECTUS Series

52KB



actual size

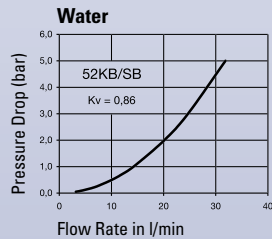
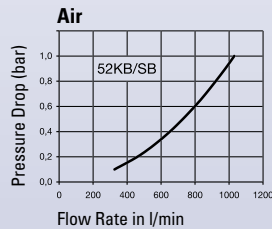
**Technical Description**

German industrial profile with UltraFlo technology. Slim design. Robust steel coupling for compressed air applications – especially for oscillating forces, due to greater insert depth of plug profile and steel sleeve.

Dust Caps (P. 325)

for coupling
for plug

Part.-No. SK23S
Part.-No. SK12S

**Chart**

You will find the following alternative versions in our current catalogue on page:

► Brass/Steel Single Shut-off P. 64

Advantages

Single handed operation. Ergonomic design. High flow valve.

Working Pressure

PB = 50 bar, maximum static working pressure with safety factor of 4 to 1.

Working Temperature*

-20°C up to +100°C (NBR)
-40°C up to +120/150°C (EPDM)
-15°C up to +200°C (FKM)
depending on the medium.

*At a temperature below -20°C and above +100°C special seals are available on request.

Material**Coupling**

Back Body
Valve Body
Sleeve
Valve
Spring and Locking Ring
Locking Balls
Seals
Inner Sleeve
Spring Plate

Standard

Brass, Nickel Plated
Brass, Nickel Plated
Steel Hardened, Nickel Plated
Brass, Nickel Plated
AISI 301
AISI 420
NBR
Brass
Brass

Plug

Plug Profile
Back Body
Valve
Spring
Seal

Steel Hardened, Nickel Plated
Brass, Nickel Plated
Brass, Nickel Plated
AISI 301
NBR

Couplings**RECTUS Series 52KB**

	Connection A	Hex SW	L mm	D mm	L1 mm	L2 mm	Hex1 SW1	B mm	G mm	Version	Part Number	DS
<p>Male Thread</p>	G 1/4	22	62	25	9					Standard	52KB AW13 SPN	■
	G 3/8	22	62	25	9					Standard	52KB AW17 SPN	■
	G 1/2	22	65	25	12					Standard	52KB AW21 SPN	■
<p>Female Thread</p>	G 1/4	22	62	25	10					Standard	52KB IW13 SPN	■
	G 3/8	22	60	25	10					Standard	52KB IW17 SPN	■
	G 1/2	22	65	25	13					Standard	52KB IW21 SPN	■

DS = Delivery Status:

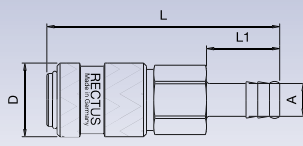
■ in stock

□ on short call

□ medium term delivery

Couplings

RECTUS Series 52KB

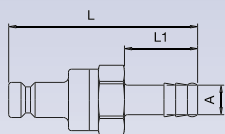


Hose Barb

Connection A	Hex SW	L mm	D mm	L1 mm	L2 mm	Hex1 SW1	B mm	G mm	Version	Part Number	DS
6 mm	21	79	25	25					Standard	52KB TF06 SPN	■
9 mm	21	80	25	25					Standard	52KB TF09 SPN	■
10 mm	21	80	25	25					Standard	52KB TF10 SPN	■
11 mm	21	80	25	25					Standard	52KB TF11 SPN	■
13 mm	21	79	25	25					Standard	52KB TF13 SPN	■

Valved Plugs

RECTUS Series 52KB

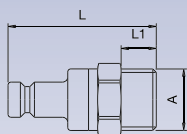


Hose Barb

Connection A	Hex SW	L mm	D mm	L1 mm	L2 mm	Hex1 SW1	B mm	G mm	Version	Part Number	DS
6 mm	21	77,5		25					Standard	52SB TF06 SPN	■□
8 mm	21	77,5		25					Standard	52SB TF08 SPN	■□
9 mm	21	77,5		25					Standard	52SB TF09 SPN	■
10 mm	21	77,5		25					Standard	52SB TF10 SPN	■□
	21	77,5		25					Standard	52SB TF13 SPN	■□

Valved Plugs

RECTUS Series 52KB



Male Thread

Connection A	Hex SW	L mm	D mm	L1 mm	L2 mm	Hex1 SW1	B mm	G mm	Version	Part Number	DS
G 1/4	22	48		9					Standard	52SB AW13 SPN	■
G 3/8	22	48		9					Standard	52SB AW17 SPN	■□
G 1/2	22	48		12					Standard	52SB AW21 SPN	■
G 1/4	22	48		9					Standard	52SB IW13 SPN	■
G 3/8	22	48		9					Standard	52SB IW17 SPN	■□

Female Thread

DS = Delivery Status: ■ in stock

■□ on short call

□ medium term delivery