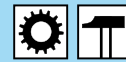




Nominal Diameter

5,5 = 25 mm²

RECTUS Series



19KA

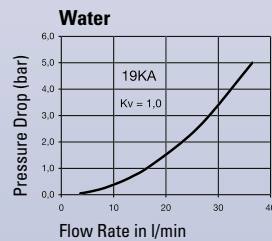
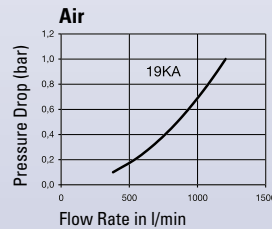
actual size

**Technical Description**

English industrial profile with UltraFlo technology. Compact dimensions. Robust coupling for compressed air applications. The steel sleeve counters oscillating forces.

Dust Caps (P. 325)

for coupling Part.-No. SK23S

**Chart****Advantages**

Single handed operation. Plug design optimised through greater insert depth. High flow valve.

Interchangeability

PCL 60 (UK)

Working Pressure

PB = 35 bar, maximum static working pressure with safety factor of 4 to 1.

Working Temperature*

-20°C up to +100°C (NBR)
-40°C up to +120/150°C (EPDM)
-15°C up to +200°C (FKM)
0°C up to +316°C (FFKM)
depending on the medium.

*At a temperature below -20°C and above +100°C special seals are available on request.

Material**Coupling**

Back Body
Valve Body
Sleeve
Valve
Inner Sleeve
Spring Plate
Spring and Locking Ring
Locking Balls
Seals

Standard

Brass, Nickel Plated
Brass, Nickel Plated
Steel Hardened, Nickel Plated Zinc
Zinc Diecasting, Nickel Plated
Brass
Brass
AISI 301
AISI 420
NBR

Plug

Plug

Steel Hardened, Nickel Plated

Couplings**RECTUS Series 19KA**

	Connection A	Hex SW	L mm	D mm	L1 mm	L2 mm	Hex1 SW1	B mm	G mm	Version	Part Number	DS
<p>Male Thread</p>	R 1/4	19	63	23	12					Standard	19KA AK13 MPN	■
	R 3/8	19	62	23	12					Standard	19KA AK17 MPN	■
	R 1/2	22	68	23	17					Standard	19KA AK21 MPN	■
<p>Female Thread</p>	G 1/4	19	58	23	9					Standard	19KA IW13 MPN	■
	G 3/8	19	58	23	9					Standard	19KA IW17 MPN	■
	G 1/2	24	60	23	12					Standard	19KA IW21 MPN	■

DS = Delivery Status: ■ in stock

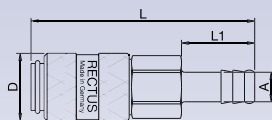
□ on short call

□ medium term delivery

Couplings

RECTUS Series 19KA

Connection A	Hex SW	L mm	D mm	L1 mm	L2 mm	Hex1 SW1	B mm	G mm	Version	Part Number	DS
6 mm	19	76	23	25					Standard	19KA TF06 MPN	■□
8 mm	19	76	23	25					Standard	19KA TF08 MPN	■
10 mm	19	76	23	25					Standard	19KA TF10 MPN	■□
13 mm	19	76	23	25					Standard	19KA TF13 MPN	■

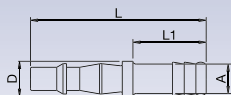


Hose Barb

Plugs

RECTUS Series 19KA

Connection A	Hex SW	L mm	D mm	L1 mm	L2 mm	Hex1 SW1	B mm	G mm	Version	Part Number	DS
6 mm		60	12	25					Standard	19SF TF06 SXN	■
8 mm		60	12	25					Standard	19SF TF08 SXN	■
10 mm		60	12	25					Standard	19SF TF10 SXN	■

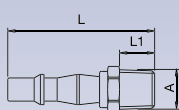


Hose Barb

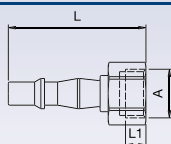
Plugs

RECTUS Series 19KA

Connection A	Hex SW	L mm	D mm	L1 mm	L2 mm	Hex1 SW1	B mm	G mm	Version	Part Number	DS
R 1/4	14	50		12					Standard	19SF AK13 SXN	■
R 3/8	17	50		12					Standard	19SF AK17 SXN	■
G 1/4	17	46		9					Standard	19SF IW13 SXN	■
G 3/8	19	47		9					Standard	19SF IW17 SXN	■□



Male Thread



Female Thread

DS = Delivery Status:

■ in stock

■ on short call

■□ medium term delivery