

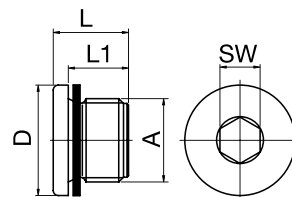


## Korek z kołnierzem z gwintem cylindrycznym

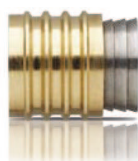


Kod	A	D	L	L1	SW
TFLM10	M10 x 1	14	11	8	5
TFLR1/8	G 1/8	14	11	8	5
TFLM12	M12 x 1,5	17	15	12	6
TFLR1/4	G 1/4	18	15	12	6
TFLM14	M14 x 1,5	19	15	12	6
TFLR3/8	G 3/8	22	15	12	8
TFLR1/2	G 1/2	26	18	14	10

## TFL...

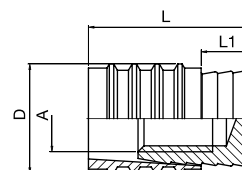


## Korek



Kod	A	D	L	L1
TFVS6	M3	6	11,5	3,5
TFVS8	M4	8	11,5	3,5
TFVS10	M6	10	14	4
TFVS12	M6	12	14	4
TFVS16	M8	16	16	4

## TFVS...

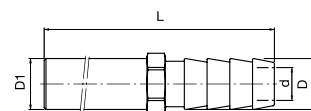


## Przedłużka z tuleją do węża



Kod	D	D1	d	L	SW
TF10/120	10 mm	10	6	120 mm	11
TF10/240	10 mm	10	8	240 mm	11
TF13/150	13 mm	14	9	150 mm	15
TF13/300	13 mm	14	9	300 mm	15

## TF...

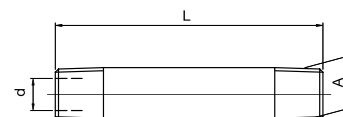


## Przedłużka dwustronnie gwintowana



Kod	A	d	L
TF1/8/50	R1/8"	6	50 mm
TF1/8/100	R1/8"	6	100 mm
TF1/8/150	R1/8"	6	150 mm
TF1/8/200	R1/8"	6	200 mm
TF1/4/50	R1/4"	9	50 mm
TF1/4/100	R1/4"	9	100 mm
TF1/4/150	R1/4"	9	150 mm
TF1/4/200	R1/4"	9	200 mm
TF3/8/100	R3/8"	12	100 mm
TF3/8/150	R3/8"	12	150 mm
TF3/8/200	R3/8"	12	200 mm

## TF...



## Kolektor



Kod	Kolor	Porty szt.	A	D2	S	H	D	L
TM4B	niebieski	4	G1/4"	G3/4"	43,2	43,0	114,3	190,5
TM4R	czerwony	4	G1/4"	G3/4"	43,2	43,0	114,3	190,5
TM6B	niebieski	6	G1/4"	G3/4"	43,2	43,0	190,5	266,7
TM6R	czerwony	6	G1/4"	G3/4"	43,2	43,0	190,5	266,7
TM8B	niebieski	8	G1/4"	G3/4"	43,2	43,0	266,7	342,9
TM8R	czerwony	8	G1/4"	G3/4"	43,2	43,0	266,7	342,9
TM4-2B	niebieski	4	G3/8"	G1"	55,9	54,1	152,4	228,6
TM4-2R	czerwony	4	G3/8"	G1"	55,9	54,1	152,4	228,6
TM6-2B	niebieski	6	G3/8"	G1"	55,9	54,1	254,0	330,2
TM6-2R	czerwony	6	G3/8"	G1"	55,9	54,1	254,0	330,2
TM8-2B	niebieski	8	G3/8"	G1"	55,9	54,1	355,6	431,8
TM8-2R	czerwony	8	G3/8"	G1"	55,9	54,1	355,6	431,8

## TM...

